



## Obsolescence Management Portal

The Transport Companies'  
Exchange & Communications  
Portal

# Finally!

Exchange with transport companies  
throughout Europe

[www.obsolescence-management.net](http://www.obsolescence-management.net)

Powered by  **AMSYS**  
Applicable Management Systems

# The Portal

The portal allows all rail operators, as well as national and regional transport companies, to obtain information on the topics of obsolescence management and spare parts supply together with all registered members, and to exchange vehicle-specific information.

Acute obsolescence cases and supply problems are published and discussed within the portal community.

Members cooperate to develop a solution or provide relevant problem-solving approaches.

As a member, you will receive unrestricted access to all information published within the portal.

# Your benefits



## TIME

Members become aware of issues as early as possible.



## COST SAVINGS

Members solve problems together and lower their costs.



## EXPERIENCE

Members benefit from other people's experiences and information.



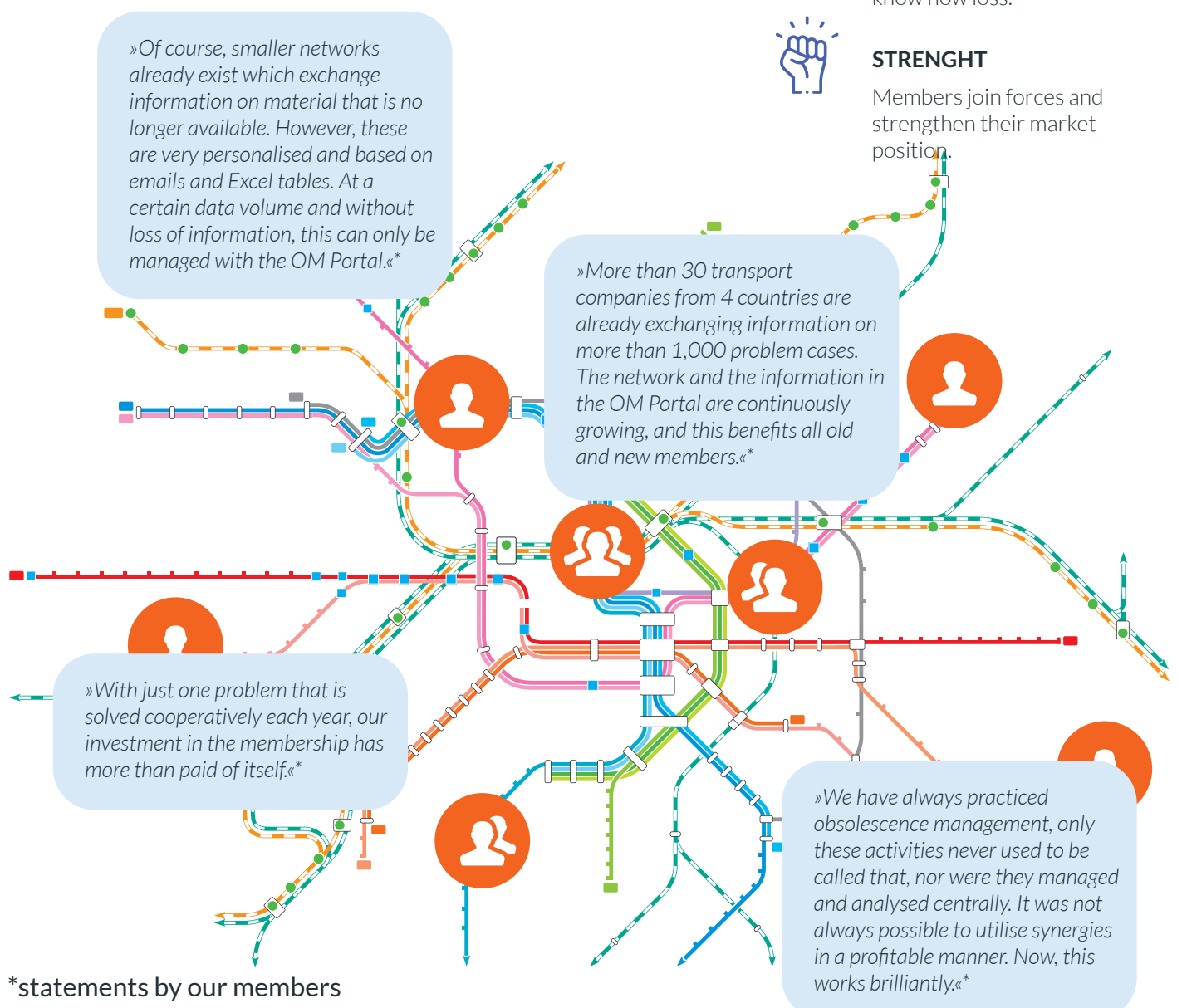
## CONSISTENCY

Standard 'data set' is protected against data & know how loss.



## STRENGTH

Members join forces and strengthen their market position.



\*statements by our members

# Become a member now!

## Who is the portal for?

- Rail operators
- National & regional transport companies
- Public transport
- Infrastructure & network companies



## Conditions for becoming a member:

- 12 months of obsolescence management € 1.500 p.a..
- Includes registration of two user profiles (e.g. for holiday cover)
- Each additional user is charged at € 500 p.a..

# More than digital, it's personal!

Portal members meet semi-annually for a personal exchange on current topics and solutions for routine challenges in the operation of trains, busses and infrastructure.

## Contents of the user conferences:

- 'Get-together' for expert discussions in the evening before the event
- Expert presentations and inspiration by portal members & guests
- Examples of current discontinuations and their management

Current dates:

[www.am-sys.com/seminare/anwendertagung-obssoleszenzmanagement/](http://www.am-sys.com/seminare/anwendertagung-obssoleszenzmanagement/)

You are also more than welcome to attend as a guest!



# Contact us without obligation!

We are happy to provide detailed information on the portal, as well as discounts for larger numbers of users. We are also available for individual consultations on choosing the right internal processes or applications to support your success.

[www.obsolescence-management.net](http://www.obsolescence-management.net)

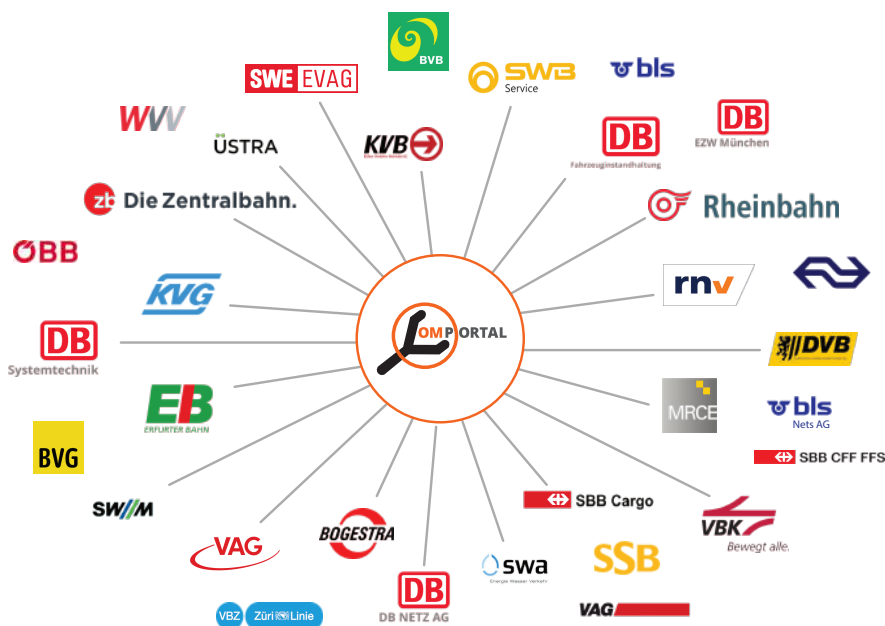
# The members

The portal was established in March 2014 at the initiative of 4 transport companies:

- Schweizerische Bundesbahnen
- Deutsche Bahn – EZW München
- Berliner Verkehrsbetriebe AöR
- Verkehrs-Aktiengesellschaft Nürnberg

The following companies now also use the portal (as at May 2021):

- Basler Verkehrsbetriebe
- BLS AG
- BLS Netz AG
- BOGESTRA - Straßenbahnen
- DB Fahrzeuginstandhaltung Dessau
- DB Systemtechnik
- Dresdner Verkehrsbetriebe AG
- Erfurter Bahn GmbH
- Erfurter Verkehrsbetriebe AG
- Freiburger Verkehrs AG
- Kassler Verkehrs-Gesellschaft AG
- Kölner Verkehrs-Betriebe AG
- Mitsui Rail Capital Europe
- Nederlandse Spoorwegen (NS)
- Österreichische Bundesbahnen
- Rheinbahn AG
- Rhein-Neckar-Verkehr GmbH
- SBB Cargo AG
- Stuttgarter Straßenbahnen AG
- Stadtwerke Augsburg Verkehrs-GmbH
- Stadtwerke Bonn Dienstleistungs-GmbH
- Stadtwerke München GmbH
- uestra Hannoversche Verkehrsbetriebe AG
- Verkehrsbetriebe Karlsruhe GmbH
- Verkehrsbetriebe Zürich
- Würzburger Versorgungs- & Verkehrs-GmbH
- zb Zentralbahn AG



## Send Discontinuation

[www.portal.pcngenerator.com](http://www.portal.pcngenerator.com)

The following companies are already sending discontinuation and change notes digitally and accordance with the VDMA standard sheet 24903 to the portal community:

**Siemens Mobility GmbH**

## Talk to us



AMSYS GmbH  
Roentgenstrasse 5  
82152 Planegg - Munich | Germany

[info@am-sys.com](mailto:info@am-sys.com)

[www.am-sys.com](http://www.am-sys.com)

+49 (0) 89 9974080 00